

## Harrison Business Center

10053 Simonson Rd., Suite 2 | Harrison, OH 45030



### Property Summary:

<b>County</b>	Hamilton
<b>Space Available</b>	5,000 SF
<b>Property Typer</b>	Office
<b>Price</b>	\$14 per SF

All information furnished is from sources deemed reliable and is subject to errors, omissions and changes prior to sale as withdrawal without notice.

### Property Description

- 5,000 SF Office
- Great Office Location
  - 6 Private Offices
  - Conference Room
  - Break Room
  - Cubicles

### For more information contact:



**Mike Lovell**  
Commercial Sales  
Associate  
513.932.6010 ext. 276  
513.373.8672 cell  
[mlovell@hsabh.com](mailto:mlovell@hsabh.com)

### For more information contact:



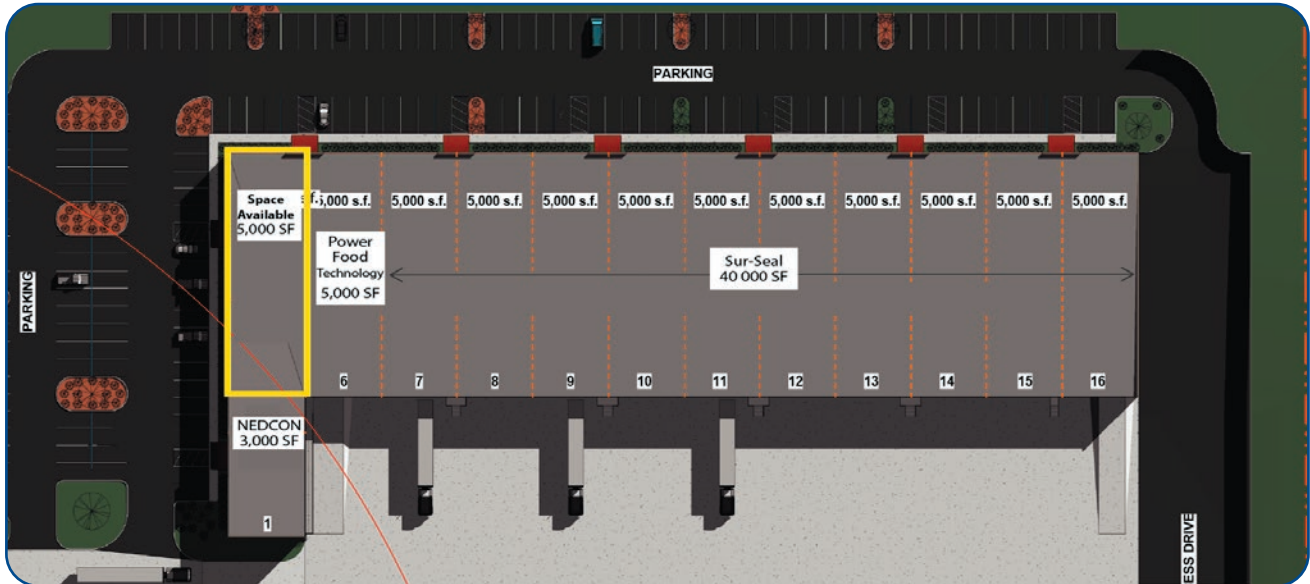
**Jeff Eichhorn**  
Executive Vice  
President  
513.932.6010 ext. 271  
513.673.6048 cell  
[jeichhorn@hsabh.com](mailto:jeichhorn@hsabh.com)

Learn more about our services—visit [www.schuelergroup.com](http://www.schuelergroup.com) today!

3000-G Henkle Drive | Lebanon, OH 45036 | 513.932.6010 | 800.589.7535

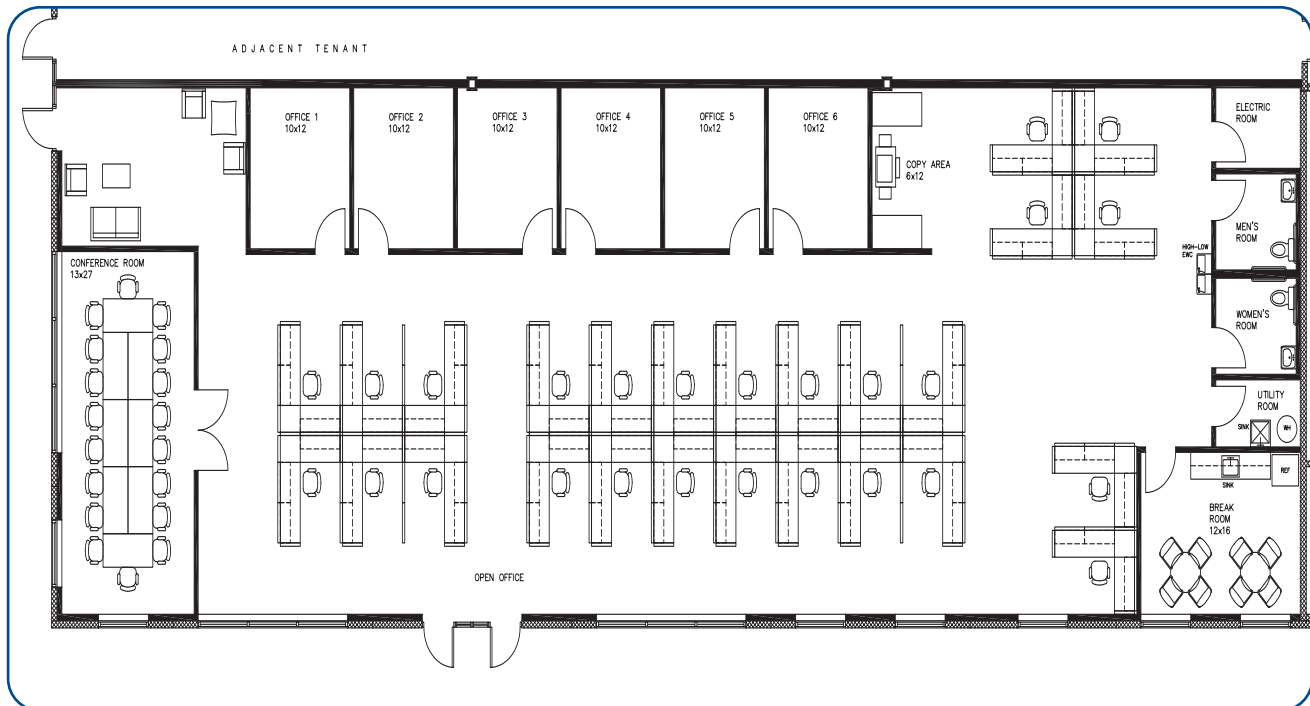
## Building Layout

10053 Simonson Rd., Suite 2 | Harrison, OH 45030



## Floor Plan

10053 Simonson Rd., Suite 2 | Harrison, OH 45030

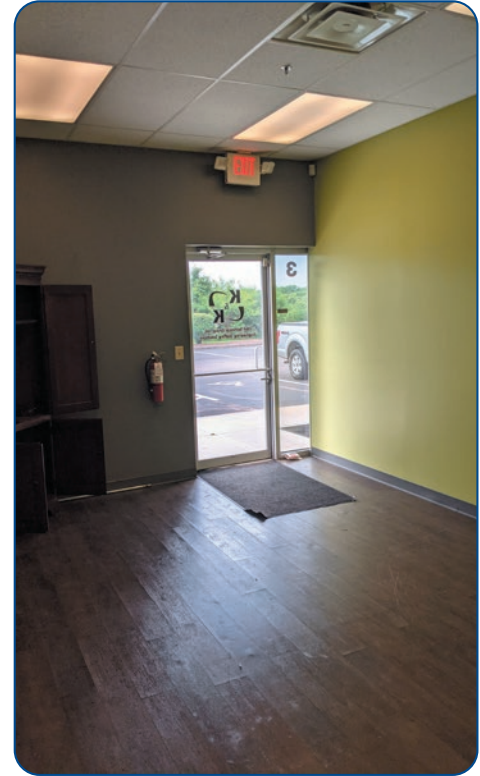


Learn more about our services—visit [www.schuelergroup.com](http://www.schuelergroup.com) today!

3000-G Henkle Drive | Lebanon, OH 45036 | 513.932.6010 | 800.589.7535

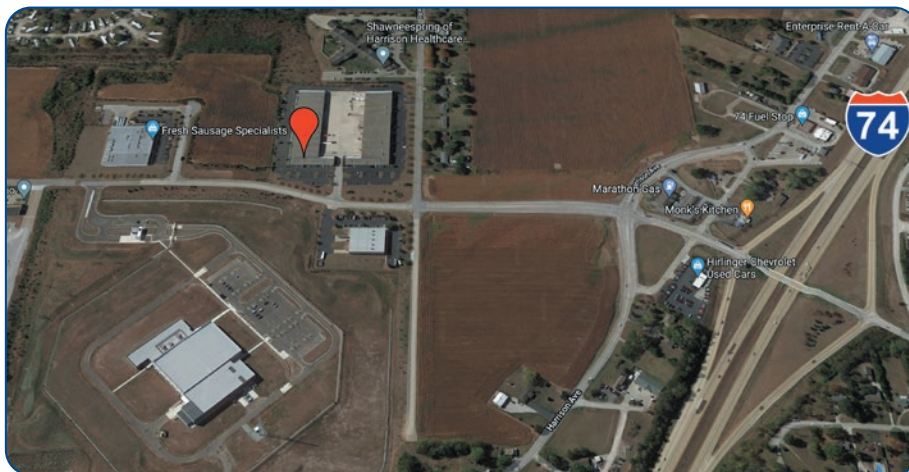
## Additional Photos

10053 Simonson Rd., Suite 2 | Harrison, OH 45030



## Additional Information

10053 Simonson Rd., Suite 2 | Harrison, OH 45030



### Location Highlights

- Part of the established and growing business park, Harrison Commerce Center
- Immediate access to I-74
- 2.5 Miles to I-275
- Frontage and visibility on Simonson Road

Learn more about our services—visit [www.schuelergroup.com](http://www.schuelergroup.com) today!

3000-G Henkle Drive | Lebanon, OH 45036 | 513.932.6010 | 800.589.7535