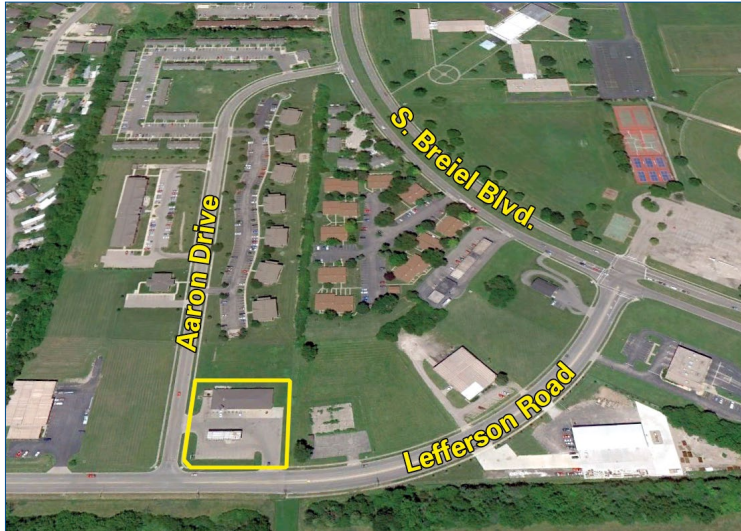


Lefferson Retail Property

4301 Lefferson Road | Middletown, OH 45044



Property Description

- Convenient store anchored strip center
- Brand new retail space
- Build-to-suit options available

Location Highlights

- Just off Breiel Boulevard
- Adjacent to multi-family and high density residential areas

County	Butler
Property Type	Retail
Lot Size	1.979 Acres
Building Size	7,300 SF
Space Available	4,500 SF divisible to 1500 SF
Price Per	\$10.00 / SF
Zoning	C-2, Roadside Commercial District
LoopNet ID	16638167

All information furnished is from sources deemed reliable and is subject to errors, omissions and changes prior to sale as withdrawal without notice.

For more information contact:



Tom Cloud
Commercial Sales
Associate
513.932.6010
tcloud@hsabh.com

Learn more about our services—visit www.schuelergroup.com today!

3000-G Henkle Drive | Lebanon, OH 45036 | 513.932.6010 | 800.589.7535