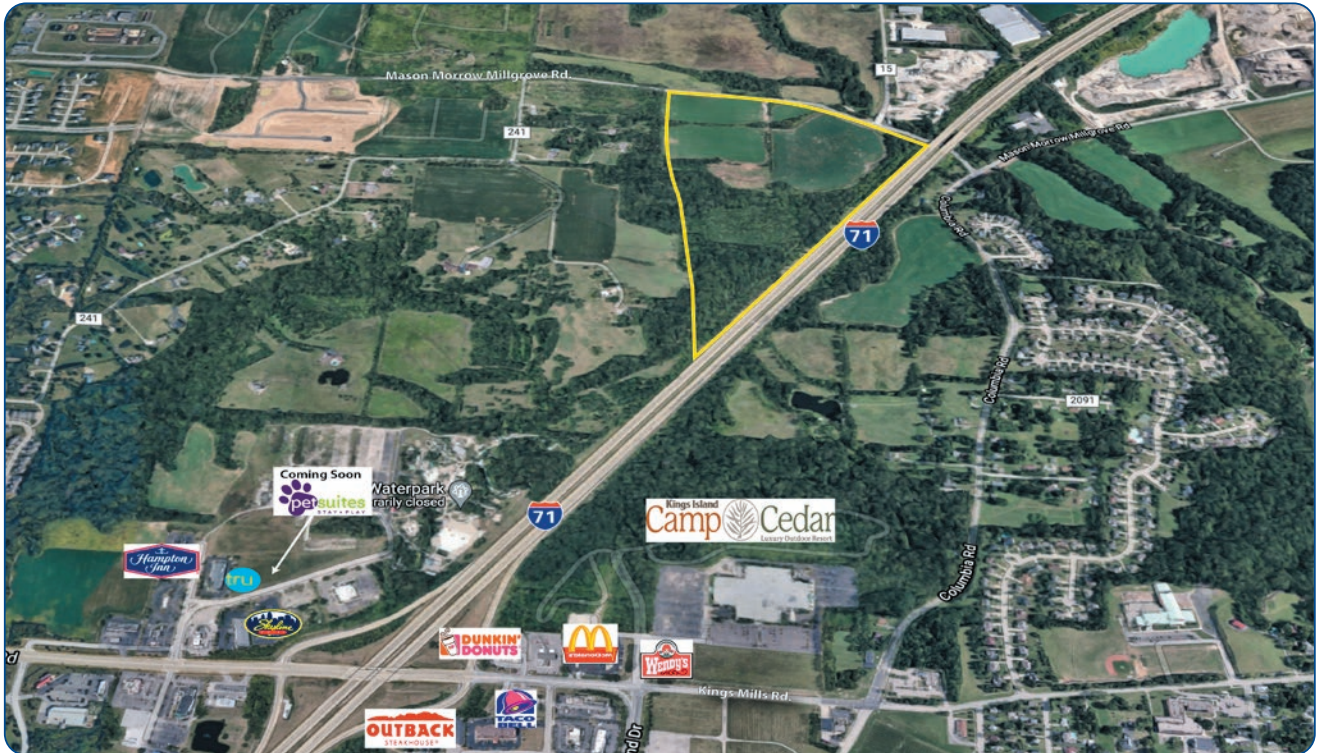


## Mason Farm

Columbia & Mason-Morrow-Millgrove Roads | Lebanon, OH 45036



### Property Summary

<b>County</b>	Warren
<b>Property Type</b>	I-1 Industrial, Manufacturing
<b>Lot Size</b>	61 Acres

All information furnished is from sources deemed reliable and is subject to errors, omissions and changes prior to sale as withdrawal without notice.

### For more information contact:



**Mike Lovell**  
Commercial Sales  
Associate  
513.932.6010 ext. 276  
513.373.8672 cell  
[mlovell@hsabh.com](mailto:mlovell@hsabh.com)

### Property Description

- All Utilities in Place
- Zoned Industrial
- Development Ready Site
- Public road access to site
- Extensive commercial and industrial developments
- For sale, lease, or build-to-suit
- Financial incentives available

Learn more about our services—visit [www.schuelergroup.com](http://www.schuelergroup.com) today!

3000-G Henkle Drive | Lebanon, OH 45036 | 513.932.6010 | 800.589.7535

## Surrounding Area

Columbia & Mason-Morrow-Millgrove Roads | Lebanon, OH 45036



### Location Highlights

- Excellent Interstate I-71 visibility
- Quick Access to I-71 from Exit 28 and Exit 25
  - Kings Mills Road Entrance/ Exit (#25):
    - 1.8 miles away
    - 4 minutes
  - Lebanon Entrance/Exit (#28)
    - 2.4 Miles away
    - 4 Minutes
- Local airport: Lebanon-Warren County Airport, 8 miles
- Located near
  - Kings Island
  - Great Wolf Lodge
  - The Golf Center
  - Camp Cedar
  - ATP Tennis Center
- Rapid industrial growth
- Water, sanitary sewer, and electric supplier: City of Lebanon
- Natural Gas: Duke Energy
- Telecommunication supplier: Sprint

Learn more about our services—visit [www.schuelergroup.com](http://www.schuelergroup.com) today!

**3000-G Henkle Drive | Lebanon, OH 45036 | 513.932.6010 | 800.589.7535**