

# Miami Commons

US 50 and Wolfpen-Pleasant Hill Road | Milford, OH 45150



## Property Summary

<b>County</b>	Clermont / Miami Township
<b>Property Type</b>	Commercial
<b>Lot Size</b>	Approx. 93 Total Acres
<b>Zoning</b>	Commercial / Retail R - PUD allows up to 157 units - residential
<b>LoopNet ID</b>	14356162

All information furnished is from sources deemed reliable and is subject to errors, omissions and changes prior to sale as withdrawal without notice.

## Property Description

- Large open sites available with all utilities
- Mixed use development
  - Commercial area on flat field / Retail along US 50
  - Residential on hillside
  - Commercial uses are office and industrial
- No local income tax
- Tax incentives available from Miami Township
- Clermont County sewer/water service with substantial capacity
- Duke Energy electric and gas at site

## For more information contact:



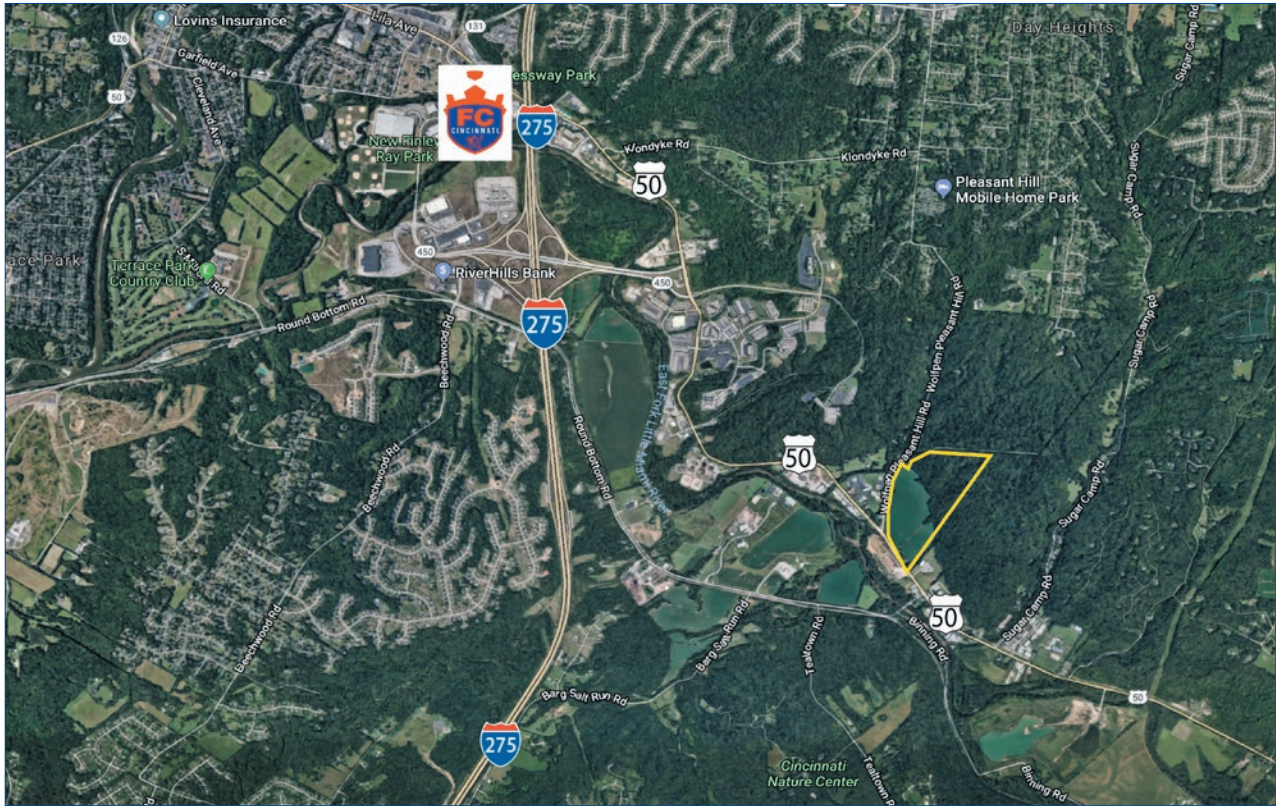
**Jeff Eichhorn**  
 Executive Vice President  
 513.932.6010 ext. 271  
 513.673.6048 cell  
 jeichhorn@hsabh.com

Learn more about our services—visit [www.schuelergroup.com](http://www.schuelergroup.com) today!

3000-G Henkle Drive | Lebanon, OH 45036 | 513.932.6010 | 800.589.7535

## Surrounding Area

US 50 and Wolfpen-Pleasant Hill Road | Milford, OH 45150



### Location Highlights:

- 2 miles from newly announced location of FC Cincinnati's World Class Training Facility
  - \$30 Million in improvements
- 1.5 miles to I-275
- Road widening on US 50 complete
- Commercial airport: Greater Cincinnati/Northern Kentucky, 32 miles
- Local airport: Clermont County, 5.5 miles
- Road improvements on Wolfpen-Pleasant Hill Rd.

Learn more about our services—visit [www.schuelergroup.com](http://www.schuelergroup.com) today!

3000-G Henkle Drive | Lebanon, OH 45036 | 513.932.6010 | 800.589.7535