

## Walton Industrial Park - North

Mary Grubbs Hwy and US State Route 25 | Walton, KY 41094



### Property Summary

<b>County</b>	Boone
<b>Property Type</b>	Industrial/Commercial
<b>Zoning</b>	Light Industrial - I-1
<b>Available</b>	Land - 20.79 Acres
<b>Lot</b>	Lot 5: 20.79 Acres (divisible)
<b>Price</b>	Call Agent
<b>Loopnet ID</b>	18130590

All information furnished is from sources deemed reliable and is subject to errors, omissions and changes prior to sale as withdrawal without notice.

### Property Highlights

- Ready-to-go Industrial
- All utilities and zoning available
- Sites available and divisible
- Rail spur possible - Norfolk Southern Rail
- Water and sewer provided by City of Walton
- Natural Gas and Electricity provided by Duke Energy
- Walton has no local earnings tax
- Part of industrial park that includes ZoteFoams and Fuji Autotech USA

### Location Highlights

- Located in fast growing Boone County
- 1 mile to I-75 on new extension
- Off exit # I-71 on I-75
- Frontage on Mary Grubbs Highway

### For more information contact:



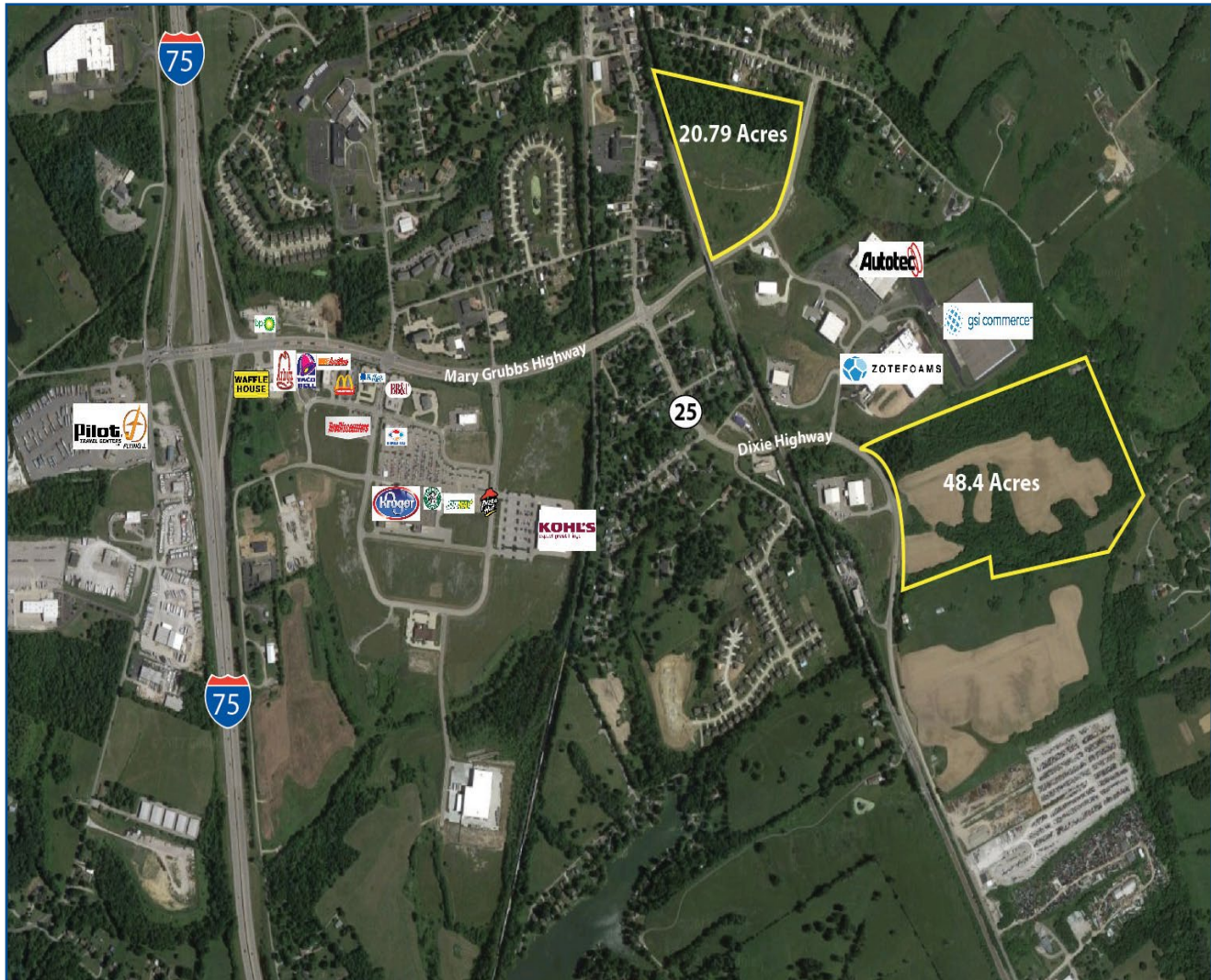
**Sean Bradley**  
 Commercial Sales Associate  
 513.932.6010 ext. 241  
 859.640/5512 cell  
[sbradley@hsabh.com](mailto:sbradley@hsabh.com)

Learn more about our services—visit [www.schuelergroup.com](http://www.schuelergroup.com) today!

3000-G Henkle Drive | Lebanon, OH 45036 | 513.932.6010 | 800.589.7535

## Walton Industrial Park - North

Mary Grubbs Hwy and US State Route 25 | Walton, KY 41094



Learn more about our services—visit [www.schuelergroup.com](http://www.schuelergroup.com) today!

3000-G Henkle Drive | Lebanon, OH 45036 | 513.932.6010 | 800.589.7535