

Interstate Lebanon

Interstate 71 & State Route 123 | Lebanon, OH | 45036

Henkle Schueler

Est. 1935

CERFAC International



COUNTY	PROPERTY TYPE	ZONING
--------	---------------	--------

Warren	Land	B-2 Retail; I-1 Light Industrial; R-1A Residential
--------	------	--

SPACE AVAILABLE	PRICE
-----------------	-------

19 Acres – Retail; 39 Acres – Industrial; 115 Acres – Residential or Commercial	Call for details
---	------------------

Property & Location Highlights:

- Joint Economic Development District; City of Lebanon and Turtlecreek Township
- New \$9 million Pilot/Flying J development complete
- New sewer line to open up large

development tracts

- Planned gateway district to fast growing residential/ commercial area
- One of the last undeveloped interstate interchanges in SW Ohio
- Immediate access to I-71

For more information, contact:



Henkle Schueler Est. 1935
CERFAC International

Mike Lovell

Commercial Sales Agent

O: 513.228.6229

C: 513.373.8672

mlovell@hsabh.com



Henkle Schueler Est. 1935
CERFAC International

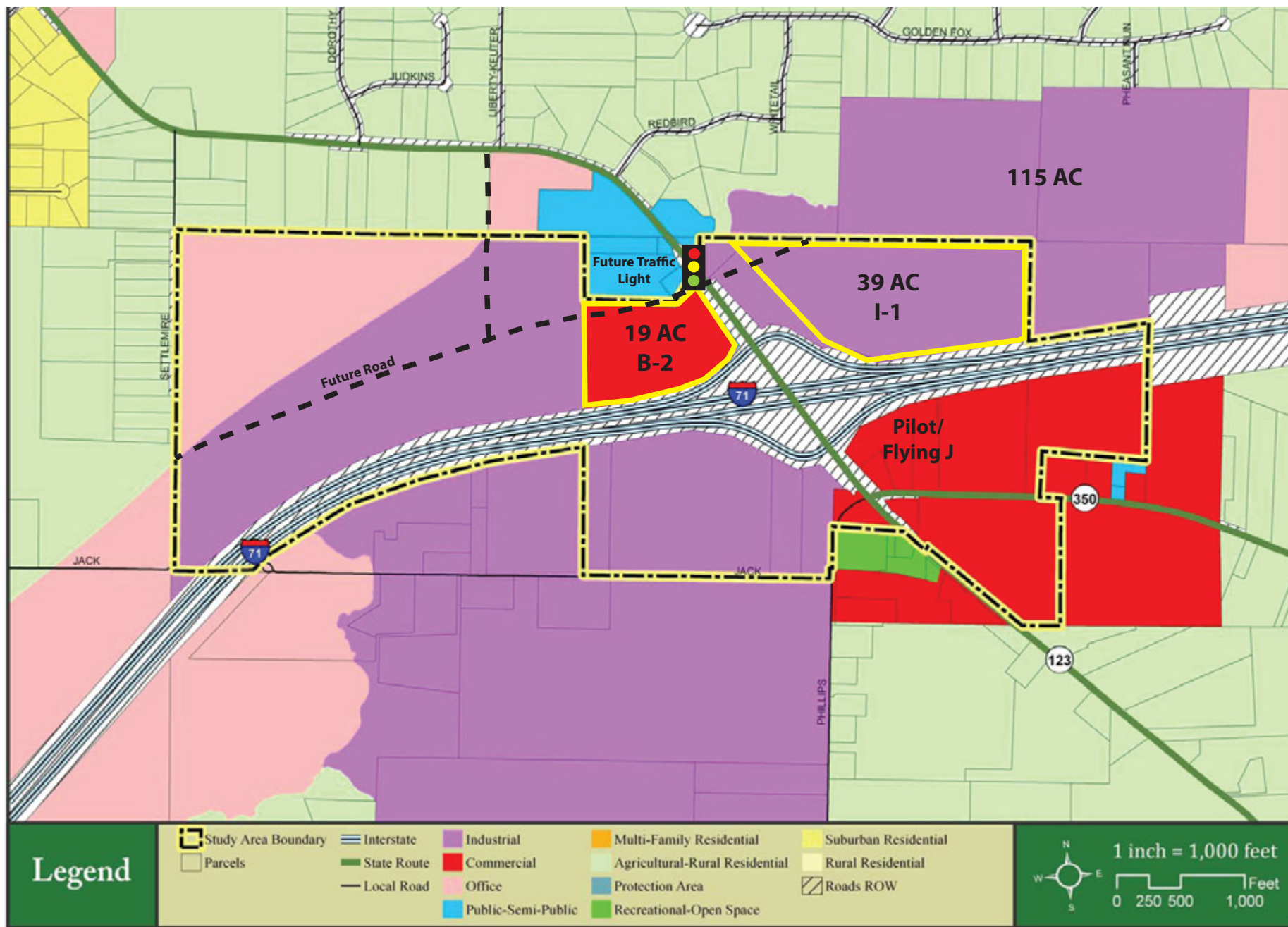
Jeff Baumgardner

Commercial Sales Agent

O: 513.228.6209

C: 937.684.2023

jbaumgardner@hsabh.com



Learn more about our services—visit [SchuelerGroup.com](https://www.schueler.com) today!

3000-G Henkle Drive | Lebanon, OH 45036 | 513.932.6010 | 800.589.7535

Interstate Lebanon

Interstate 71 & State Route 123 | Lebanon, OH | 45036

Radius	1 Mile	3 Mile	5 Mile
Population			
2027 Projection	661	9,647	41,789
2022 Estimate	613	8,979	38,576
2010 Census	589	8,765	35,663
Growth 2022 - 2027	7.83%	7.44%	8.33%
Growth 2010 - 2022	4.07%	2.44%	8.17%
2022 Population by Hispanic Origin			
2022 Population	5	184	1,381
2022 Population			
White	589 96.08%	8,476 94.40%	36,179 93.79%
Black	11 1.79%	207 2.31%	958 2.48%
Am. Indian & Alaskan	3 0.49%	29 0.32%	118 0.31%
Asian	5 0.82%	113 1.26%	494 1.28%
Hawaiian & Pacific Island	0 0.00%	4 0.04%	20 0.05%
Other	5 0.82%	150 1.67%	808 2.09%
U.S. Armed Forces	0	0	0

Households			
2027 Projection	253	3,505	15,476
2022 Estimate	235	3,258	14,274
2010 Census	224	3,166	13,169
Growth 2022 - 2027	7.66%	7.58%	8.42%
Growth 2010 - 2022	4.91%	2.91%	8.39%
Owner Occupied	173 73.62%	2,601 79.83%	10,148 71.09%
Renter Occupied	61 25.96%	657 20.17%	4,125 28.90%

2022 Households by HH Income			
Income: <\$25,000	50 21.19%	398 12.22%	1,759 12.32%
Income: \$25,000 - \$50,000	14 5.93%	360 11.05%	2,247 15.74%
Income: \$50,000 - \$75,000	23 9.75%	588 18.05%	3,154 22.10%
Income: \$75,000 - \$100,000	23 9.75%	411 12.62%	1,989 13.93%
Income: \$100,000 - \$125,000	25 10.59%	493 15.14%	1,655 11.59%
Income: \$125,000 - \$150,000	10 4.24%	225 6.91%	779 5.46%
Income: \$150,000 - \$200,000	21 8.90%	286 8.78%	1,237 8.67%
Income: \$200,000+	70 29.66%	496 15.23%	1,454 10.19%
2022 Avg Household Income	\$144,835	\$117,311	\$101,137
2022 Med Household Income	\$108,000	\$92,183	\$74,815

Business Employment by Type	# of Businesses	# Employees	#Emp/Bus
Total Businesses	29	133	5
Retail & Wholesale Trade	5	30	6
Hospitality & Food Service	3	37	12
Real Estate, Renting, Leasing	2	6	3
Finance & Insurance	2	8	4
Information	1	9	9
Scientific & Technology Services	1	1	1
Management of Companies	0	0	0
Health Care & Social Assistance	5	5	1
Educational Services	0	0	0
Public Administration & Sales	1	6	6
Arts, Entertainment, Recreation	0	0	0
Utilities & Waste Management	2	6	3
Construction	4	14	4
Manufacturing	1	4	4
Agriculture, Mining, Fishing	0	0	0
Other Services	2	7	4

Learn more about our services—visit [SchuelerGroup.com](https://www.schueler.com) today!

3000-G Henkle Drive | Lebanon, OH 45036 | 513.932.6010 | 800.589.7535