

## Eaton CBD Office Space for Lease

110 W. Main Street | Eaton, OH 45320



### Property Summary

<b>County</b>	Preble
<b>Property Type</b>	Office
<b>Space Available</b>	3,500 SF
<b>Price</b>	\$7.50 MG
<b>Loopnet ID</b>	11293630

All information furnished is from sources deemed reliable and is subject to errors, omissions and changes prior to sale as withdrawal without notice.

### Great for:

- Insurance, legal, accounting, call center, staffing, satellite or regional office center, government agency

### Property Highlights

- 2nd Floor of LCNB Eaton Branch
- Privatized Access at bank entrance via elevator or stairwell
- Open and private perimeter offices
- Conference Rooms
- Reception Desk
- Ample Off-Street Parking
- Upscale finishes
- Existing Office Furniture can be negotiated

### Location Highlights

- In the Central Business District of Eaton
- Adjacent to County Courthouse
- Crossroads of US 35 and SR 127
- Walkable District- Restaurants and support services

### For more information contact:



**Mark Langdon**  
Commercial Sales  
Associate  
Office: 937.684.9847  
Cell: 937.673.1916  
mlangdon@hsabh.com

Learn more about our services—visit [www.schuelergroup.com](http://www.schuelergroup.com) today!

3000-G Henkle Drive | Lebanon, OH 45036 | 513.932.6010 | 800.589.7535

## Additional Property Photos

110 W. Main Street | Eaton, OH 45320

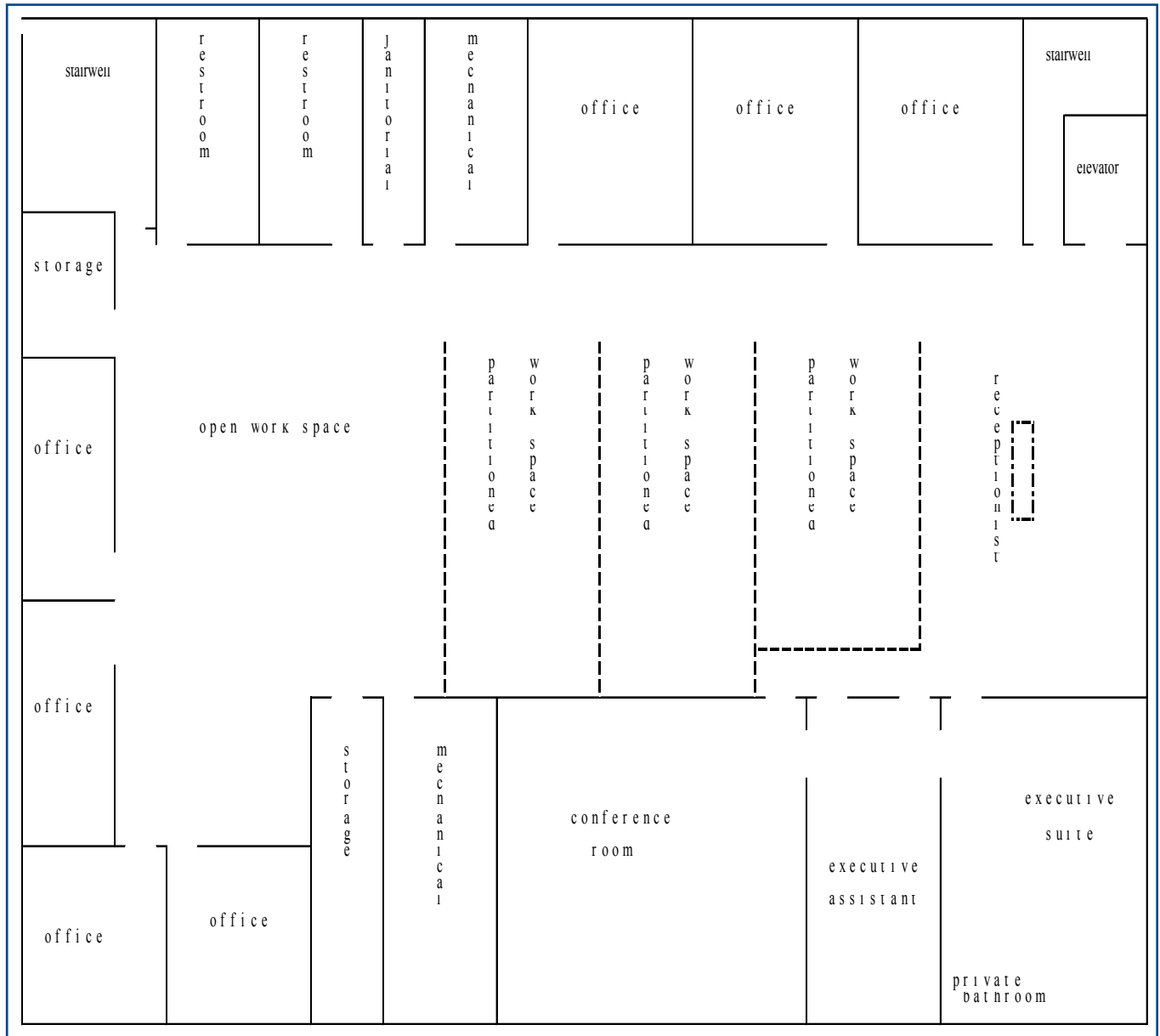


Learn more about our services—visit [www.schuelergroup.com](http://www.schuelergroup.com) today!

3000-G Henkle Drive | Lebanon, OH 45036 | 513.932.6010 | 800.589.7535

## Floor Plan

110 W. Main Street | Eaton, OH 45320



Learn more about our services—visit [www.schuelergroup.com](http://www.schuelergroup.com) today!

3000-G Henkle Drive | Lebanon, OH 45036 | 513.932.6010 | 800.589.7535