

Speedway Farms

I-71 and KY SR 1039, Sparta Exit (#55) | Sparta, KY 41086



Property Summary

County	Gallatin
Future Property Type	Commercial/ Residential Commercial
Zoning	Currently agriculture with commercial overlay
Available	304 Divisible
Price	Call Agent

All information furnished is from sources deemed reliable and is subject to errors, omissions and changes prior to sale as withdrawal without notice.

Property Highlights

- 304 acres available near the Kentucky Speedway
- Property is divisible
- All utilities to the commercial site
- Flexible Zoning

For more information contact:



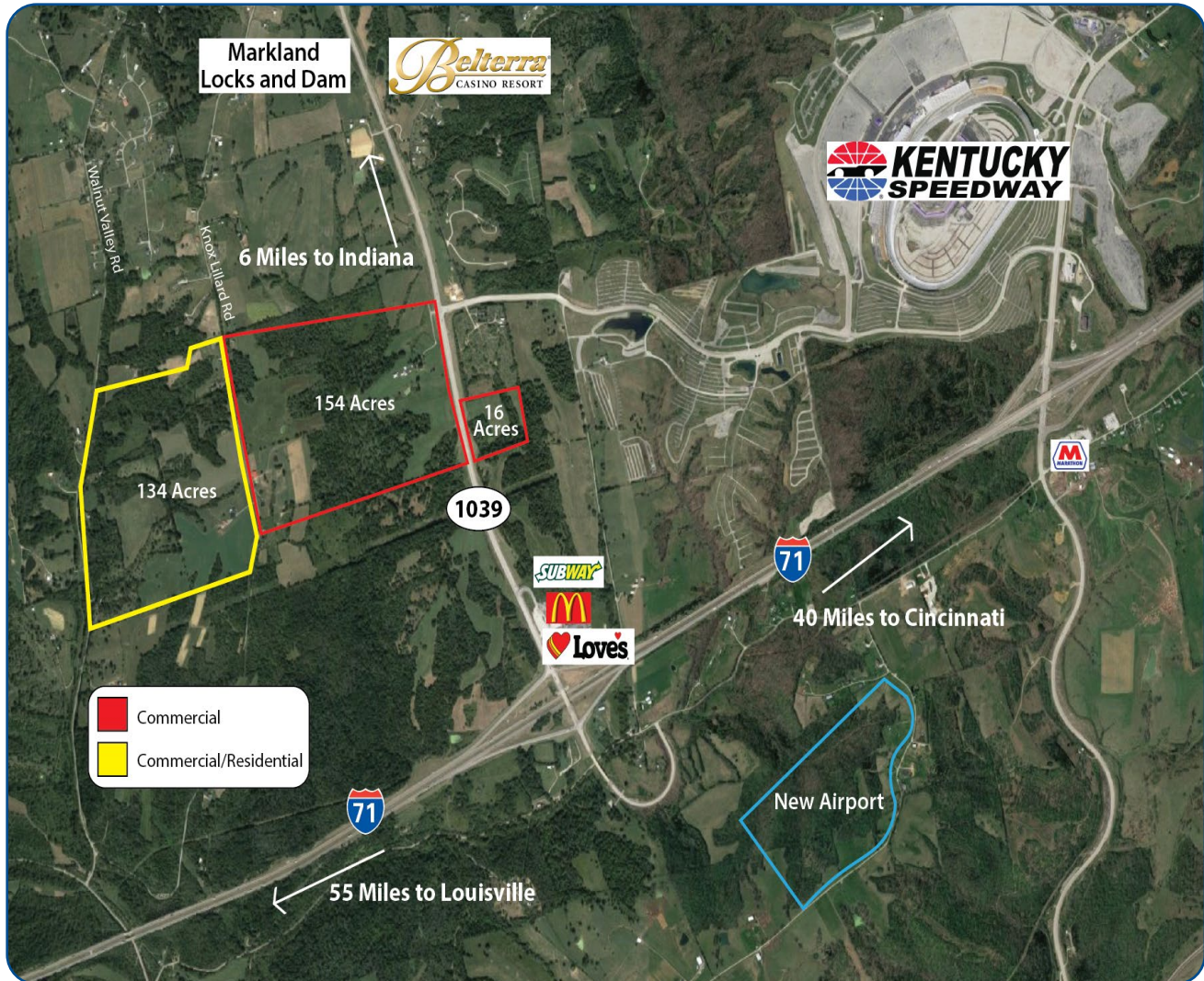
Lisa Dressman
 Commercial Sales Associate
 859.448.9051
 859.640.9869 cell
ldressman@hsabh.com

Learn more about our services—visit www.schuelergroup.com today!

3000-G Henkle Drive | Lebanon, OH 45036 | 513.932.6010 | 800.589.7535

Speedway Farms

I-71 and KY SR 1039, Sparta Exit (#55) | Sparta, KY 41086



Location Highlights

- Located in Gallatin County
- Great access, to SR 1039
- Located at Sparta Exit (#55), at I-71 and Kentucky SR 1039
- 40 Miles to Cincinnati
- 55 Miles to Louisville

Learn more about our services—visit www.schuelergroup.com today!

3000-G Henkle Drive | Lebanon, OH 45036 | 513.932.6010 | 800.589.7535